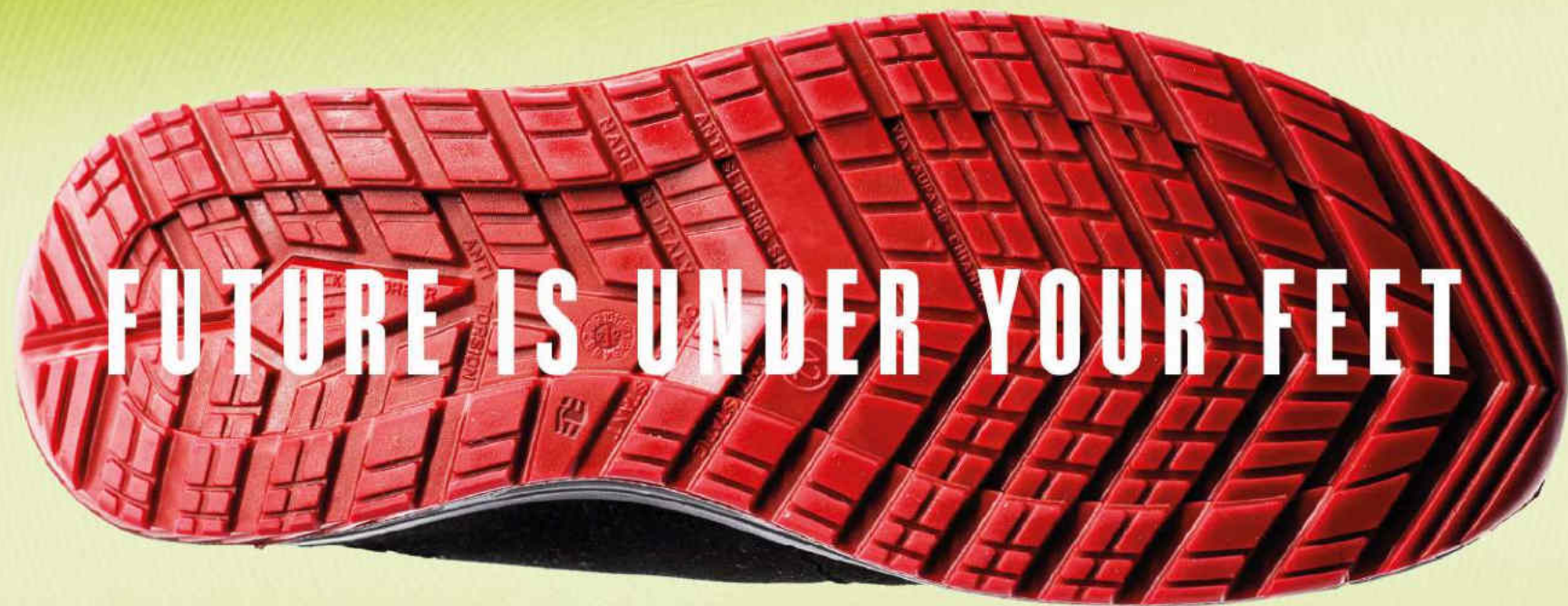


# GIASCO

SAFETY SHOES



FUTURE IS UNDER YOUR FEET

BOOK **2023**



# MANAGEMENT SYSTEM CERTIFICATE

DNV-GL





**CERTIFICATIONS**

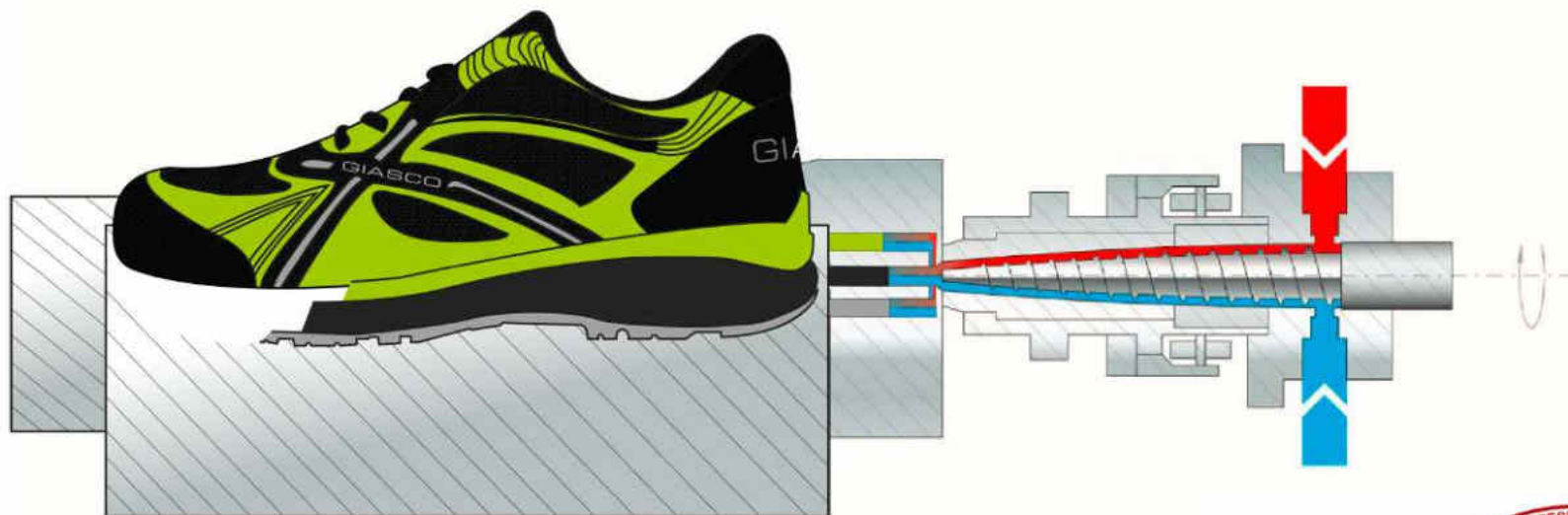


**PROMPT DELIVERY SERVICE**



**DESIGN**






**3PU PATENT**


**THE FIRST SHOE WITH *3* PU *DENSITIES* INJECTED**





**3PU INJECTION SEQUENCES**

 3D è una tecnologia rivoluzionaria brevettata che permette di offrire l'unica calzatura con 3 diversi strati di poliuretano iniettati su tomaia. Obiettivo di questo prodotto è quello di offrire Sicurezza, il massimo Comfort e una sicura Stabilità del piede grazie alle 3 densità che caratterizzano i vari strati della suola.

 3D is a patented revolutionary technology that allows us to offer the only shoe with 3 different layers of polyurethane injected on the upper. The aim of this product is to offer Safety, maximum Comfort and Secure foot stability thanks to the 3 densities that characterize the various layers of the sole.

 3D est une technologie révolutionnaire brevetée qui nous permet d'offrir la première chaussure avec 3 couches différentes de polyuréthane injecté sur la tige. Le but de ce produit c'est d'offrir sécurité, un confort optimal et de garantir la stabilité du pied grâce aux 3 densités qui caractérisent les différentes couches de la semelle.

 3D es una tecnología revolucionaria patentada que nos permite ofrecer el único zapato con 3 niveles diferentes de poliuretano inyectados en el corte. El objetivo de este producto es ofrecer seguridad, el máximo confort y una estabilidad segura del pie gracias a las tres densidades que caracterizan las distintas capas de la suela.

 3D ist eine revolutionäre und patentierte Technologie, die es gestattet einen einzigartigen Schuh mit drei verschiedenen Schichten aus in das Oberleder injiziertem Polyurethan anzubieten. Das Ziel dieses Produkts ist es, dem Fuß dank der drei unterschiedlichen Dichten der verschiedenen Schichten der Sohle einen maximalen Komfort sowie eine sichere Stabilität zu bieten.

# ***3ULTRA***

***TRIPLE YOUR  
RESISTANCE***



# ***3CROSS***

***TRIPLE YOUR  
STABILITY***



# ***3ULTRA RUBBER***

***TRIPLE YOUR  
RESISTANCE***



# ***3HYBRID***

***TRIPLE YOUR  
COMFORT***



# ***3RUN***

***TRIPLE YOUR  
STYLE***



# ***3MOVE***

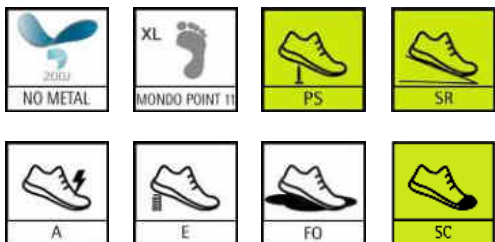
***TRIPLE YOUR  
MOBILITY***





3PU PATENT

# BULTRA



## TECHNOLOGY 3PU INJECTION SEQUENCES





**NEW**

OPAL S1PS FO SC SR 3U434N  
37-49



**NEW**

SILVER S7S FO CI SC SR 3U451L  
37-49



**NEW**

GOLD S7S FO CI SC SR 3U458L  
37-49



**NEW**

ZIRCON S3S FO SC SR 3U481D  
37-49



**NEW**

TOPAZ S3S FO SC SR 3U488D  
37-49



**NEW**

QUARTZ S3S FO CI SC SR 3U017G  
39-47



# BULTRA RUBBER



**ICE GRIP**  
**PATENTED**  
outsole design

ANTI-TORSION INSERT

BENDING POINT

TILTED HEEL TO  
IMPROVE THE WALKING

ANTI-SLIPPING HEEL

ANTISHOCK





**NEW**



LOBBIA S7S FO CI HI HRO SC SR 3RUB451L  
38-49



**NEW**



TRIGLAV S7S FO CI HI HRO SC SR 3RUB458L  
38-49



**NEW**



AROLLA S7S FO CI HI HRO SC SR 3RUB459L  
38-49



**NEW**



MARMOLADA S7S FO CI HI HRO SC SR 3RUB179E  
38-47



ICE GRIP  
PATENTED  
OUTSOLE DESIGN

BULTRA RUBBER



**3PU PATENT**

# 3MOVE



**SRC**  
ANTI-SLIPPING SOLE

*extra  
LIGHT  
shoes*



**TECHNOLOGY**  
3PU INJECTION SEQUENCES



**PATENTED**  
outssole design

ANTI-TORSION INSERT

BENDING POINT

TILTED HEEL TO  
IMPROVE THE WALKING

ANTI-SLIPPING HEEL

ANTISHOCK



COMFORT

STABILITY

ANTISLIP





**NEW**

FOX S3  
36-47

3M453N



**NEW**

TIGER S3  
36-47

3M457N



**NEW**

LION S3  
36-47

3M184K



**NEW**

CHEETAH S1P  
39-47

3M184Y



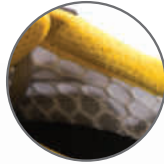
**3PU PATENT**

**PATENTED**  
outssole design



**3MOVE**

**NEW**



LEOPARD S1P  
36-47

3M454T



**NEW**



SHARK S1P  
36-47

3M450N



**NEW**



MAKO S1P  
36-47

3M182T



**NEW**



FALCON S3  
36-47

3M474NA



**3PU PATENT**

**PATENTED**  
outssole design



**3MOVE**



3PU PATENT

# 3HYBRID



**SRC**  
ANTI-SLIPPING SOLE

*extra  
LIGHT  
shoes*



**TECHNOLOGY**  
3PU INJECTION SEQUENCES





**PAG S3L FO SR**  
36-47

3H063N



**NEW**

**KRK S3L FO SR**  
36-47

3H149N



**SAMOA S1P**  
36-47

3H085N



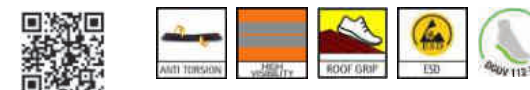
**FIJI S3**  
39-47

3H142EV



**BALI S3**  
36-47

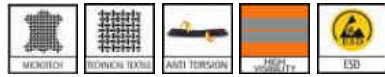
3H149EV





LAS VEGAS S1P  
36-47

3H154EC



IBIZA S3L FO SR  
36-47

3H154NK



LIPARI S1PL FO SR  
36-47

3H182NG



PONZA S3L FO SR  
36-47

3H025NG



BORNEO S3  
36-47

3H037NG





**ARUBA S3**  
36-47

3H192EV



**MYKONOS S1P**  
36-47

3H192ER



**SYLT S1P**  
39-47

3H432Y



**BURGAZ S1P**  
36-47

3H184J



**GOTLAND S1P**  
39-47

3H224EJ







**FUERTEVENTURA S1P** 3H433N  
36-47



**TAHITI S1P** 3H171Q  
36-47



**PANAREA S1P** 3H174V  
36-47



**JAVA S3** 3H022C  
36-47



**MALÈ S3** 3H022H  
39-47





USTICA S2  
36-47

3H0021



CORFU S2  
36-47

3H0020



MAUI S3  
36-47

3H1911



ZANTE S1P  
36-47

3H0951



MINORCA S2  
36-47

3H0201



**CHEMICAL RESISTANCE**

**BLACK MICROWASH**  
Laboratory tests for the determination of chemical resistance (sodium hydroxide 40 % K) of upper material in accordance with analogue method EN 13832-3:2018.

**WHITE MICROWASH**  
Laboratory tests for the determination of chemical resistance (N, P, R, K, NaCl 37%\*) of upper material in accordance with analogue method EN 13832-3:2018.

Laboratory tests for the determination of chemical resistance (N, P, R, K, NaCl 37%) of SOLE material in accordance with analogue method EN 13832-3:2018.

- KUBE/ERGO black;
- KUBE white;
- 3CROSS/3RUN orange;
- 3HYBRID/ERGO light grey.

\* K - sodium hydroxide 40 %; N - acetic acid 99 %; P - hydrogen peroxide 30 %; R - sodium hypochlorite (13 ± 1) % of active chlorine; NaCl 37% - sodium chloride 37%;



3PU PATENT

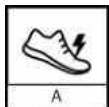
# 3CROSS



NO METAL



MONDO POINT II



A



E



FO

**SRC**  
ANTI-SLIPPING SOLE



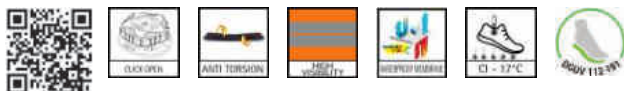
**TECHNOLOGY**  
3PU INJECTION SEQUENCES





STELVIO S3 CI  
39-47

3C224N



**NEW**

CERVINO S3L FO SR  
39-47

3C184G



MAKALU S3 CI WR  
38-47

3C058G



ELBRUS S3  
36-47

3C198N



K2 S3 CI  
39-47

3C149E



HIMALAYA S3 CI WR  
39-47

3C178E





ANETO S3 3C1910



TRIVOR S3 3C1980



THOMSON SB FO E P CI WRU 3C060D



SINAI S1P 3C182T



KAMET S3 CI 3C122D



AINOS S3 3C022C



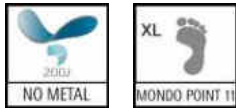
EIGER S3 3C022H





3PU PATENT

# BRUN



**SRC**  
ANTI-SLIPPING SOLE

*extra  
LIGHT  
shoes*



**TECHNOLOGY**  
3PU INJECTION SEQUENCES





**BERG S3**  
39-47

3R171R



**JARBO S3**  
36-47

3R453N



**OSTRO S3**  
36-47

3R457N



**OROSHI S1P**  
36-47





3R172T



**FLOW SB FO E P CI WRU**  
36-47

3R022E



	ASTM 2413-11	
	C.S.A. Z195-14	
INSULATING SOLE FROM >1000 MΩ 		



**LIGHT SB FO E P CI WRU**  
36-47

3R198E



	ASTM 2413-11	
	C.S.A. Z195-14	
INSULATING SOLE FROM >1000 MΩ 		



LIBECCIO S1P 3R085N  
36-47



GHIBLI S1P 3R182T  
36-47



HURRICANE S3 3R171V  
39-47



SHAMAL S3 3R173O  
36-47



BURAN S3 3R191O  
36-47



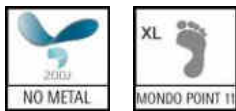
CIENZO S3 3R198O  
36-47





BEST SLIPPING RESISTANCE

**KUBE**



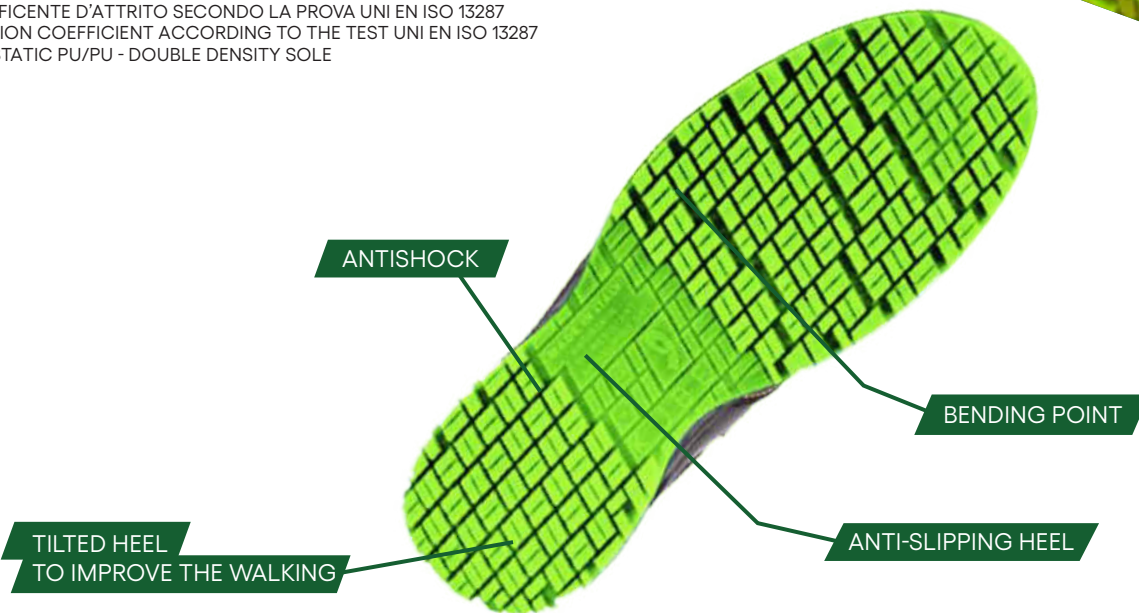
**SRC**  
ANTI-SLIPPING SOLE

**PERFECT GRIP**

*extra*  
**LIGHT**  
*shoes*

**ROOF GRIP UNI 11583:2015**

COEFFICIENTE D'ATTRITO SECONDO LA PROVA UNI EN ISO 13287  
FRICTION COEFFICIENT ACCORDING TO THE TEST UNI EN ISO 13287  
ANTISTATIC PU/PU - DOUBLE DENSITY SOLE





**GOLF NEW S3**  
39-47

KU142EV



**LIBRA NEW S3**  
36-49

KU149EV



**MIAMI S1P**  
35-47

KU093N



**RUGBY S3**  
36-47

KU025N



**BASKET S3**  
36-47

KU037N



perfect grip

**KUBE**



**NORDIC S3**  
36-47

KU043N



**BOXE S3**  
39-47

KU065N



**KARATE S3**  
39-47

KU069N



**PERÙ S1P**  
34-47

KU095T



**BOSTON S3**  
36-47

KU051L



**DANCE S1P**  
35-42

KU055HF



*Cady*

perfect grip

**KUBE**



PANAMA S1P  
35-49

KU083T



KAYAK S3  
36-47

KU025T



SOFTBALL S3  
39-47

KU037T



VOLARE S3  
36-47

KU474NA



YORK S3  
35-49

KU061D



OXFORD S3  
35-49

KU068D



perfect grip

KUBE



MEDINA S2 KU0020



VILNIUS S3 KU0250



FREE SB FO A E KU0070



POLO S2 KU0021



STOCKHOLM S3 KU1911



HELSINKI SB FO A E KU0071



BALTIC S2 KU0201



CONSTANTA S2 KU8801



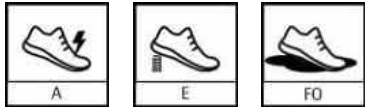
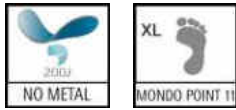
ICEBERG S2 CI KU0111



perfect grip

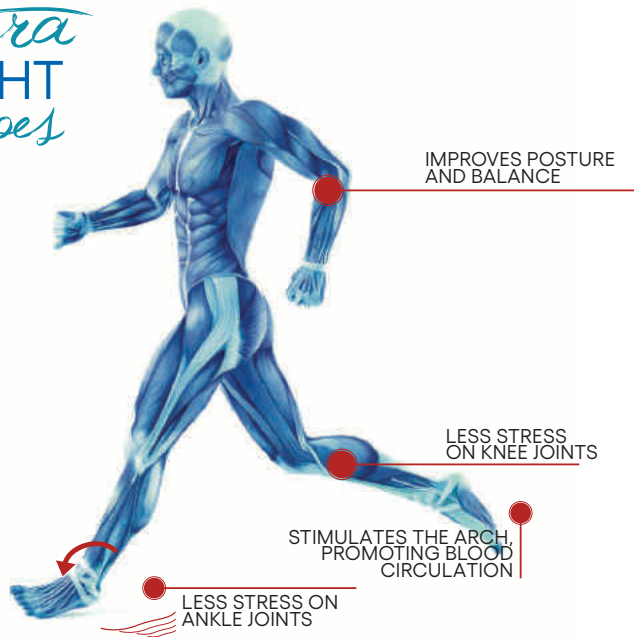
KUBE

ANTISTATIC PU/PU -  
DOUBLE DENSITY SOLE  
**ERGO SAFE**



**SRC**  
ANTI-SLIPPING SOLE

*extra*  
**LIGHT**  
*shoes*





SANTA FE S1P

36-47



71T83C



SOCCER S3

36-47



ER025T



VOLLEYBALL S3

39-47



ER037T



HAITI S1P

36-47



71N93C



SPORT S3

36-47



73N25C



GYM S3

36-47



73N37C



LIMA S1P

36-47



71T95C



ARENDA S2

36-47



72O02



BERGEN S2

36-47



72102



ANTISTATIC PU/PU -  
DOUBLE DENSITY SOLE  
**STABILE**



						<b>SRC</b> ANTI-SLIPPING SOLE
NO METAL	XL MONDO POINT 11	A	E	FO	ANTI TORSION	



KÖLN S3 CI WR TO058L  
39-47



DEFENDER S3 CI WR AN TO159D  
39-47



HANNOVER S3 CI WR TO169N  
39-47

	HIGH VISIBILITY	WATERPROOF	WR	CI - 17°C	ANTI TORSION	SOUL 112 501

	AN	HIGH VISIBILITY	WATERPROOF	WR	CI - 17°C	ANTI TORSION

	HIGH VISIBILITY	WATERPROOF	WR	CI - 17°C	ANTI TORSION	SOUL 112 501

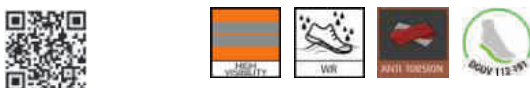




ALASKA S3 CI WR TO084B  
39-47



BILBAO S3 CI WR TO149G  
39-47



MALAGA S3 TO061D  
39-47



GRANADA S3 TO068D  
39-47



DAKOTA S3 CI TO011D  
39-47



TITAN S3 CI TO011G  
39-47



STRAUSS S3 TO880BP  
39-47



ANTISTATIC PU/PU -  
DOUBLE DENSITY SOLE  
***ACTION***

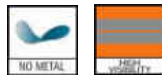


**SRC**  
ANTI-SLIPPING SOLE



**GULF S3**  
39-47

AC011A



**BIG SIZE**

**KENT S3**  
36-51

AC061D



**BIG SIZE**

**CAMBRIDGE S3**  
36-51

AC068D





HAMBURG S3 CI WR AC058L  
36-49



IRON RM S3 AC068DRM  
37-47



SOLDADOR S3 AC880BSP  
39-47



MOZART S2 AC810B  
36-47



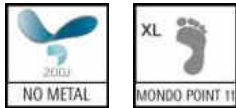
VERDI S2 AC880B  
36-47



VERDI S3 R AC880BRP  
39-47



ANTISTATIC PU -  
RUBBER SOLE  
**HARD ROCK**



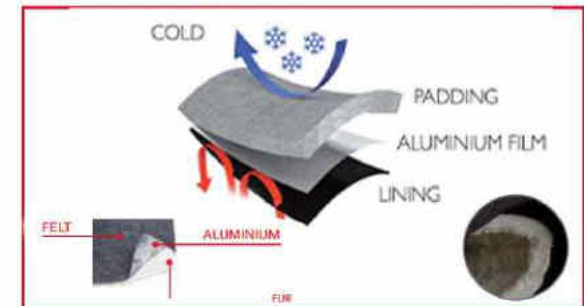
**SRC**  
ANTI-SLIPPING SOLE



BENDING POINT

ANTI-SLIPPING HEEL

ANTISHOCK



ANTIBACTERIAL TECHNOLOGY



CAIRO S3 CI HI HRO  
39-47

HR068D



KIEL S3 CI HI WR HRO  
37-48

HR058L



ALPI S3 CI HI WR HRO  
37-47

HR058G



GENK S3 CI HI HRO  
37-47

HR051L



**NEW**



WELDER S3L FO CI HI HRO SC SR  
39-47

HR122D

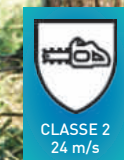


ERCOLANO S3 HI HRO  
39-47

HR066D



**HARD ROCK**  
ANTISTATIC PU - RUBBER SOLE



**METABASAL PROTECTION**  
protection resisting 18 100 JOULE

M-PROTECTION S3 HI HRO M HR470EMR  
39-47



WOODCUT S3 CI HI WR HRO (80236)  
39-47



WINTER S3 CI HI WR HRO HR011L  
39-47



ARTIC S3 CI HI WR HRO HR179E  
39-47



QUEBEC S3 CI HI WR HRO HR178E  
39-47



**HARD ROCK**  
ANTISTATIC PU - RUBBER SOLE

INSULATING PU/PU/PU SOLE  
INSULATING PU / RUBBER SOLE

# ***DIELECTRIC SOLE LINE***



## **C.S.A. Z195-14**

DIELECTRIC SOLE LINE exceeds requirements fixed from the Canadian norm CSA for electrical resistance. Determination of Electric Shock Resistance to a potential of **20.000 V** / 60 Hz, for a period of 1 min.



## **ASTM 2413 - 11**

DIELECTRIC SOLE LINE exceeds requirements electrical resistance (EH) in accordance with ASTM 2413 - 11 electric hazard - Voltage: **20.000 V** / 60 Hz - duration: 1 min. - requirement of the electrical flow lower than 1.0 mA.



## **INSULATING SOLE FROM > 1000 MΩ**

The bottom of the shoe, within some limits (no humidity, it does not concern the upper), offers electrical resistance against tension up to 1.000V - M Ω > 1.000

**3RUN**



FLOW SB FO E P CI WRU 3R022E  
36-47



**3RUN**



LIGHT SB FO E P CI WRU 3R198E  
36-47



**HARD ROCK**



SAMEL SB FO E P CI HI WRU HRO  
HRD155D  
38-47



**3CROSS**



THOMSON SB FO E P CI WRU  
3C060D  
38-47



**DIELECTRIC SOLE LINE**  
INSULATING PU / RUBBER SOLE  
INSULATING PU/PU/PU SOLE





VOLT SB FO E P HRO  
39-47 HRD055H



HERTZ SB FO E P HRO  
39-47 HRD154T



FRANKLIN SB FO E P CI HI WRU HRO  
HRD052T  
37-47



EDISON SB FO E P CI HI WRU HRO  
HRD060D  
37-48



TESLA SB FO E P CI HI WRU WR HRO  
HRD057E  
39-47



**DIELECTRIC SOLE LINE**  
INSULATING PU / RUBBER SOLE  
INSULATING PU/PU/PU SOLE

# PROFESSIONAL *CITY*



NO METAL



MONDO POINT II



A



E



FO

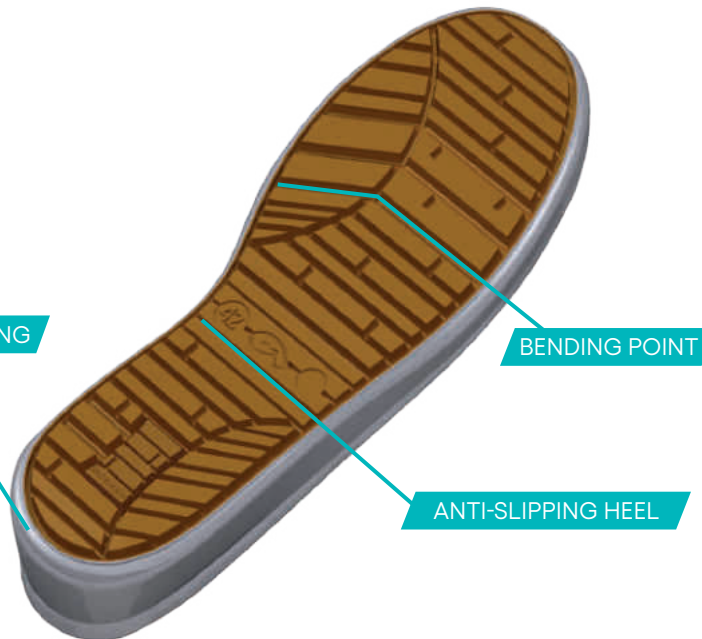
**SRC**  
ANTI-SLIPPING SOLE

HIDDEN  
OUTSOLE  
TECHNOLOGY

TILTED HEEL  
TO IMPROVE THE WALKING

BENDING POINT

ANTI-SLIPPING HEEL





EAGLE O2 FO  
36-47

C7004I



SNAKE O2 FO  
36-47

C7181O



SPIDER O1P FO  
36-47

C7154N



MALMO O2 FO CI  
36-47

C7025O



LUTON O3 FO  
36-47

C7068OC





1000  
36-49



MEMORY  
36-47



4000  
35-47



5000  
34-49



DIELECTRIC  
37-47



GA514-10  
110 cm



GA513-10  
90 cm



GA509-10  
CM 67X32X28





SB=



S1=SB+E+A+FO  
CLOSED SEAT REGION



S1P=SB+E+A+P+FO



S2=S1+WRU



S3=S2+P+  
CLEATED OUTSOLE



SB=



S1=SB+E+A  
CLOSED HEEL AREA



S1P=SB+E+A+P



S1PL=SB+E+A+PL



S1PS=SB+E+A+PS



S2=S1+WPA



S3=S2+P+  
CLEATED OUTSOLE



S3L=S2+PL+  
CLEATED OUTSOLE



S3S=S2+PS+  
CLEATED OUTSOLE



S6=S2+WR



S7=S3+WR



S7L=S3L+WR



S7S=S3S+WR



UNI EN ISO 20347:2012



OB=

basic requirement

O1=OB+E+A  
CLOSED SEAT REGION



O1P=OB+E+A+P



O2=O1+WRU



O3=O2+P+  
CLEATED OUTSOLE



roof certification  
UNI 11583:2015



UKCA marking UKCA  
United Kingdom



USA STANDARD  
astm 2413-18  
IMPACT/COMPRESSION

◆ NEW 20345:2022

◇ 20345:2012



scuff cap    sole resistance to hydrocarbons    toecap impact (200J) compression (15kN)    slipping resistant sole    slip resistance ceramic floor + detergent NaLS (sodium lauryl sulphate)    slip resistance ceramic floor + glycerine    energy absorption of seat region    antistatic footwear    water resistant upper    water resistant shoe    antiperforation midsole    cold insulation of sole complex    cold insulation of sole complex    outsole resistant to hot contact    heat insulation of sole complex    metatarsal protection    ankle protection



**XSTICKER and XPEN**

19x15,5 cm



**XBAG SPORT**

42x34 cm



**XDISPLAY**



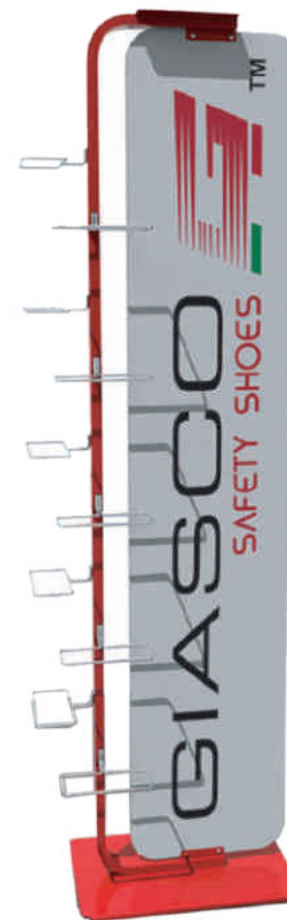
**XBAG NYLON**

50x30 cm



**XTOTEM**

156x57x21 cm



**XEXPO**

183x48x30 cm



**XCARPET**

60x40 cm



**XPOUF**

35x35x35 cm

**3PU PATENT**

**BULTRA**

page 6



**BULTRA  
RUBBER**

page 8

**3PU PATENT**



**3MOVE**

page 10

**3PU PATENT**

**BHYBRID**

page 13

**3PU PATENT**

**3CROSS**

page 19

**3PU PATENT**

**3RUN**

page 22

**KUBE**

page 25

**ERGO SAFE**

page 30

**STABILE**

page 32

**ACTION**

page 34

**HARD ROCK**

page 36

**DIELECTRIC LINE**

page 39

**CITY**

page 42

**ACCESSORIES**

page 44

**STANDARDS**

page 45

**ADVERTISING**

page 46

**GIASCO**  
SAFETY SHOES  <sup>TM</sup>



[www.giasco.com](http://www.giasco.com)

Via Zaupa, 50 • 36072 Chiampo (VI) - Italy  
T. +39 0444 624477 • F. +39 0444 623085  
E. [giasco@giasco.com](mailto:giasco@giasco.com)

